

Needle-Felted Penguin Kit Instructions



Kit Contents:

Box, white fiber, black and colored fiber in small bag, small bag with yarn and hanger, business card, and felting needle secured in recycled cork.

Warning: Felting needles are very sharp. Please use caution when using. Small children should be supervised at all times when using this tool.

Items Not Included in Your Kit But May be Helpful:

Felting foam mat (available at most craft and sewing stores).

Tapestry needle (available at most craft and sewing stores).

Small scissors for trimming excess fiber.

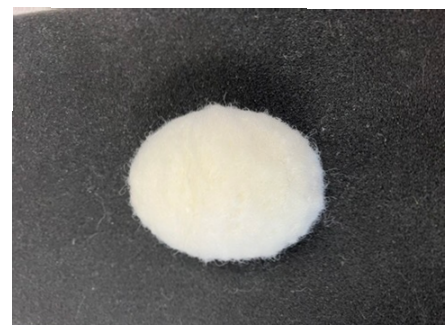
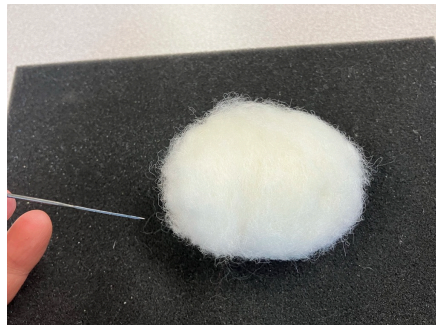


Helpful Hint:

Always use your felting needle at a 90-degree angle, poking straight up and down to avoid breaking your needle.

Getting Started:

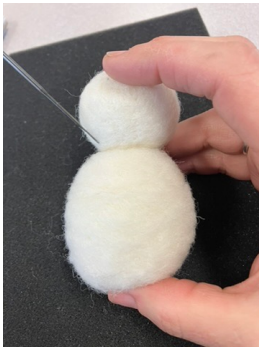
Begin with the largest ball of white fiber. Use your felting needle and poke the fiber until it becomes firm, shaping into an oval/egg-shape as you go. This process can take several minutes. This piece will be the body.



Helpful Hint:

In the beginning felting stage, try not to make the balls too firm. It will be easier to thread your needle and yarn through softer fiber. Once your ornament is strung together, you can make your snowman firmer, especially the head and middle body where you will add details such as buttons and facial features.

Next, take the smaller ball of white fiber and Using your felting needle, poke the fiber until it becomes firm, shaping into a ball. This process can take several minutes. This ball will be the head.



Putting Your Penguin Together:

Place the small ball on top of the oval and attach by felting them together with your felting needle.

Add the Black Fiber:

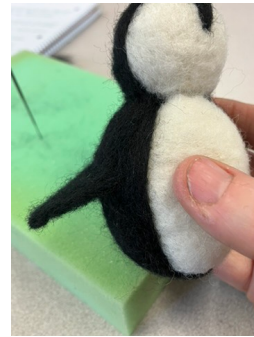
Take small amounts of black fiber. Starting at the front of the penguin, angle and add fiber leaving a white oval belly. Continuing to work with small pieces, cover the rest of the body, including the back. Once the body is complete, move to the head. Start with a small section and create a point on the front of the face leaving the rest of the front white and covering the rest of the head including the back as shown below.





Flippers:

Taking two small sections of black fiber, and working one at a time, shape the flippers as shown in the photos. Attach the flippers to the body.



Helpful Hint: It takes very small amount of fiber to create facial features. Start with smaller amounts and you can always add more if needed.

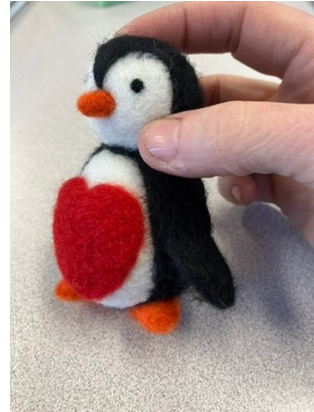
Eyes & Beak / Bill:

Take a very small amount of the dark fiber and roll into a small ball between your fingers. Place the dark fiber on the small ball (head) where you want the eyes to be and begin poking them into place with your felting needle. If you have some stray dark hairs, you can “grab” them with your felting needle and move the needle in a swirling or circular motion before poking it into place. Repeat the process for the second eye. Next, take a small portion of your orange-colored fiber. Pull it slightly and fold in half. Rub between your fingers and palm of hand to create an oval or round shaped nose. The heat from rubbing will help the nose felt and become firm. You can continue to felt the nose on your felting mat, but be very careful with felting small object and take care to not poke yourself. Once the nose is the size and shape you would like, take the widest side of the nose and begin poking into place on the face in the center just at or below the black point. Poke until it is firmly in place.



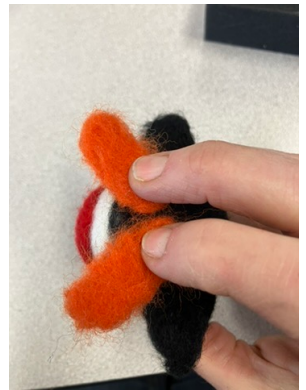
Heart:

Take the red fiber and place it on your felting mat. Shape it into a heart being careful not to felt it too hard into the mat. You'll need to lift it to place on your penguin. Once you have the shape, you can add it to the body.



Feet / Flippers:

Take more of your orange fiber place it on your mat creating two flat, oval shaped flat flippers, similar to the way you made your heart. Then attach you feet/flippers to the bottom of your penguin body. I like to angle my feet outwards as shown in the photo to the right. If you prefer your feet to face straight out, you can position them that way before you attach them to the body.



Finish: If you would like your penguin to hang like an ornament, use your tapestry needle to add the yarn to the top of the head.

Enjoy your “love”ly Penguin!



**** Copyright of Goldieknots Montana. May not be distributed without permission. For personal use only. ****

